

NEW!

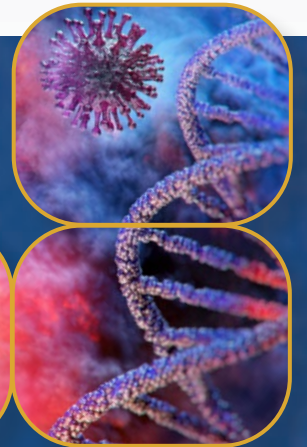


Airstream® Class II Type A2
Biosafety Cabinet, Model AR2-4S9-NS-G4

Airstream®

Class II Type A2 Biological Safety Cabinets

The Leading Energy Efficient, Quiet, and Ergonomic Biosafety Cabinet



ESCO
SCIENTIFIC



Zero Volt Relay Contact

- Zero Volt Relay Contact to turn ON/OFF exhaust blower and signal the building alarm



Rocker Switches and Pressure Gauge

- Easy to use switches
- Displays filter loading status
- Manually adjustable UV timer



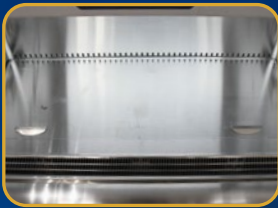
Adjustable UV Timer

- Easily adjustable to desired minutes or hours
- Prolongs UV lamp life, for not turning it ON overnight



One-Piece Interior Wall

- Double layer side walls with negative pressure
- Easy to reach service fixture and outlets
- Large radius corner for easy cleaning



Dished Work Tray

- Contains spillage
- Angled edge for easy cleaning
- V-shaped grille to prevent blocking



Raised Ergonomic Arm Rest

- Helps prevent grille blocking
- Comfortable working posture



Removable Paper Catch

- Easy-to-clean
- Optional pre-filter can be fitted



Available in 0.9, 1.2, 1.5, and 1.8 meter width (3', 4', 5', and 6')



NSF 49

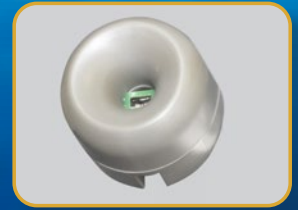


UL 61010



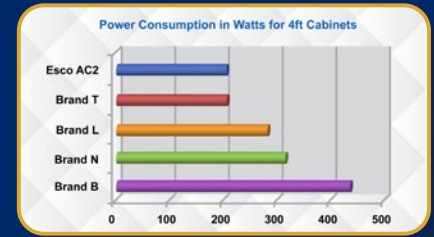
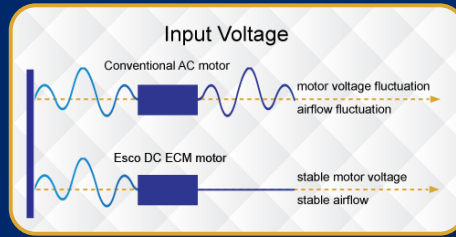
Airflow Sensor

- Monitors real-time airflow for safety
- Alerts the user if airflow is insufficient



Energy-efficient DC ECM Blower

- The leading energy efficient Class II Type A2 Biosafety Cabinet in the world with 70% energy savings compared to AC motor
- Stable airflow despite building voltage fluctuations & filter loading
- Standby mode to further reduce power consumption by 60%

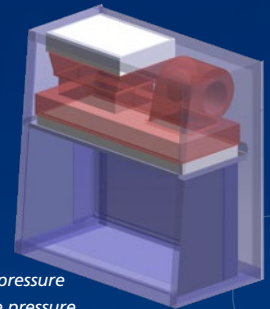


ULPA Filter

- 10x Filtration efficiency of HEPA filter
- Creates ISO Class 3 work zone instead of industry-standard ISO Class 5
- Same 10 years filter life and replacement cost as HEPA filters

Dynamic Chamber™

- Blower plenum and side walls are surrounded by negative pressure
- Prevents contaminants from escaping outside
- Steel plenum with Isocide™ coating, instead of flexible bag plenum, to prevent contamination leak



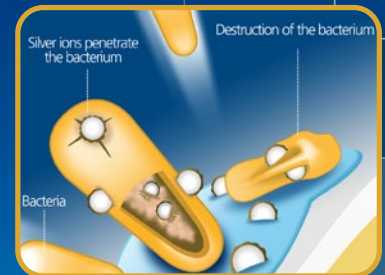
Positive pressure
Negative pressure

Angled Sash

- 10° angled front to optimize user comfort, reduce glare and maximize reach into the work area

ISOCIDE™ Powder Coat

- Silver-ion impregnated powder coat
- Inhibits microbial growth to improve safety
- Prevents the plenum from becoming biohazard landfill



| Certification | | | | |
|----------------------|--------------------|--|---|---|
| | Biosafety Cabinets | Air Quality | Filtration | Electrical Safety |
| Standards Compliance | NSF / ANSI 49* | ISO 14644.1, Class 3, Worldwide JIS B9920, Class 3, Japan JIS B55295, Class 3, Japan US Fed Std 209E, Class 1 USA | EN-1822 (H14), Europe IEST-RP-CC001.3, USA IEST-RP-CC007, USA IEST-RP-CC034.1, USA | UL-61010A-1, USA CSA22.2, No.1010-192, Canada EN-61010-1, Europe IEC61010-1, Worldwide |

* The NSF / ANSI 49 certified models are AR2-3S9-NS, AR2-4S9-NS, AR2-5S9-NS, AR2-6S9-NS

TECHNICAL SPECIFICATIONS

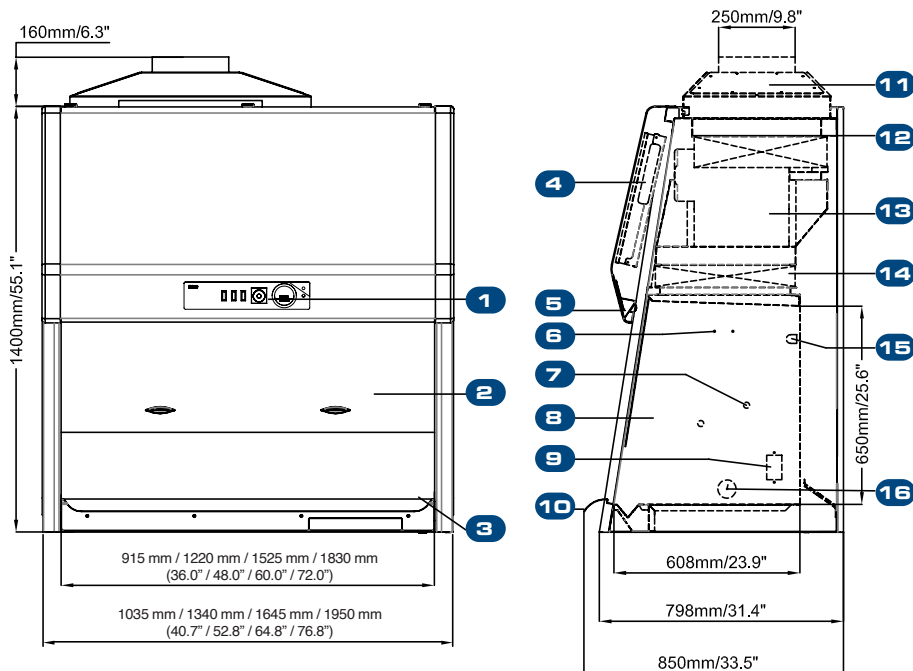
| Model | 110-130 VAC, 50/60 Hz | AR2-3S9-NS-G4 2010945 | AR2-4S9-NS-G4 2010752 | AR2-5S9-NS-G4 2010977 | AR2-6S9-NS-G4 2010925 |
|--|---|---|---|---|---|
| External Dimensions (W x D x H) | | 1035 x 850 x 1400 mm (40.7" x 33.5" x 55.1") | 1340 x 850 x 1400 mm (52.8" x 33.5" x 55.1") | 1645 x 850 x 1400 mm (64.8" x 33.5" x 55.1") | 1950 x 850 x 1400 mm (76.8" x 33.5" x 55.1") |
| Gross Internal Dimensions (W x D x H) | | 915 x 610 x 660 mm (36.0" x 24.0" x 26.0") | 1220 x 610 x 660 mm (48.0" x 24.0" x 26.0") | 1525 x 610 x 660 mm (60.0" x 24.0" x 26.0") | 1830 x 610 x 660 mm (72.0" x 24.0" x 26.0") |
| Usable Work Area | | 0.45 m ² (4.9 ft ²) | 0.6 m ² (6.5 ft ²) | 0.75 m ² (8.2 ft ²) | 0.9 m ² (9.8 ft ²) |
| Tested Opening | | 203 mm (8") or 254 mm (10") | | | |
| Working Opening | | 218 mm (8.6") or 268 mm (10.6") | | | |
| Average Inflow Velocity | | 0.53 m/s (105 fpm) | | | |
| Average Downflow Velocity | | 0.30 m/s (60 fpm) | | | |
| Airflow Volume | Inflow / Exhaust Without Ducting | 354 cmh (208 cfm) | 473 cmh (280 cfm) | 591 cmh (348 cfm) | 709 cmh (417 cfm) |
| | Downflow | 553 cmh (325 cfm) | 738 cmh (434 cfm) | 922 cmh (543 cfm) | 1107 cmh (652 cfm) |
| | Required Exhaust with Optional Thimble Exhaust Collar | 531 cmh (313 cfm) | 710 cmh (418 cfm) | 887 cmh (522 cfm) | 1064 cmh (626 cfm) |
| | Static Pressure For Optional Thimble Exhaust Collar | 32 Pa / 0.12 in H ₂ O | 45 Pa / 0.18 in H ₂ O | 57 Pa / 0.23 in H ₂ O | 68 Pa / 0.27 in H ₂ O |
| ULPA Filter Typical Efficiency | | >99.999% at 0.1 to 0.3 micron, ULPA as per IEST-RP-CC001.3 USA >99.999% at MPPS, H14 as per EN 1822 EU | | | |
| Sound Emission per NSF / ANSI 49* | | 57.5 dBA | | 58.5 dBA | 60.5 dBA |
| Fluorescent Lamp Intensity | | 982 lux (91 foot candles) | 1079 lux (100 foot candles) | 1040 lux (97 foot candles) | 1035 lux (96 foot candles) |
| Cabinet Construction | Main Body | 1.2 mm (0.05") / 18 gauge EG Steel with Isocide™ Oven-Baked Epoxy-Polyester Anti-microbial Powder Coating | | | |
| | Work Zone | 1.5 mm (0.06") / 16 gauge, Stainless Steel 304, 4B finish | | | |
| | Side Walls | 1.5 mm (0.06") / 16 gauge, Stainless Steel 304, 4B finish | | | |
| Electrical 110-130 VAC, 50/60 Hz | Cabinet Full Load Amps (FLA) | 11 | 11.5 | 12.5 | 15 |
| | Heat Load (BTU / Hr) | 503 | 628 | 698 | 999 |
| | Nominal Power Consumption (W) | 160 | 200 | 222 | 318 |

Specifications are subject to change without notice.

*Noise reading in open field condition / anechoic chamber.

Noise reading in normal room varies by room size, layout, and background noise, but may reach roughly 3-4 dBA above these values.

Engineering Drawing



1. Rocker Switches and Pressure Gauge
2. Tempered Glass - Sliding Sash Window
3. Stainless Steel Dished Work Tray
4. Electrical/Electronic Panel
5. LED Lamps
6. Provision for IV Bar (Optional)
7. Service Fixture Retrofit Kit Provision
8. Stainless Steel Side Wall
9. Duplex GFCI Electrical Outlets (5A Max)
10. Stainless Steel Curved Armrest
11. Exhaust Collar (Optional)
12. Exhaust ULPA (H14) Filter
13. ECM Blower
14. Downflow ULPA (H14) Filter
15. UV Lamp
16. Cable Port

Common Accessories



Additional SF-2U Service Fixture



Thimble Exhaust Collar with Alarm



IV Bar



Foot Rest



Seismic Bracket



SPM Motorized Stand, 28-40" height



12086 Miramar Pkwy
 Miramar, Florida, 33025
 +1 305 600 0444
 info@prolabcorp.com
 www.prolabcorp.com