



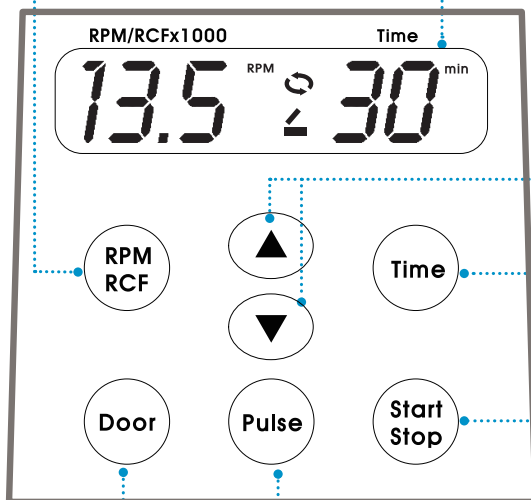
Display & Control Panel

Setting Speed

Press once : RPM | Press twice : RCF

Display Window

Status of Speed, Time, Running, Door Open / Close



Door Open

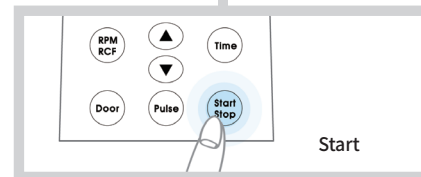
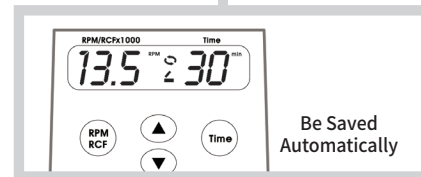
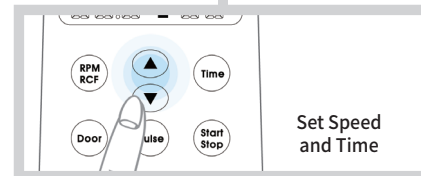
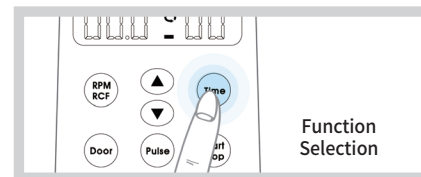
Short Spin

Time/Speed
arrow keys

Time
less than 30 min

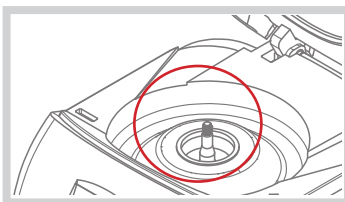
Start / Stop

Operation

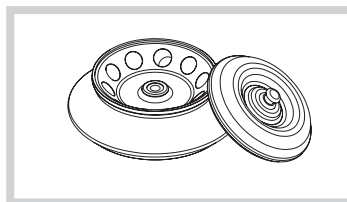




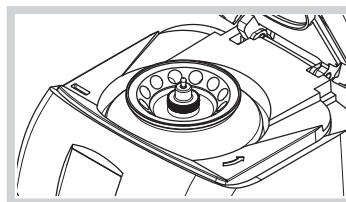
Precautions and Maintenance Tips

**Chamber cleaning & checking**

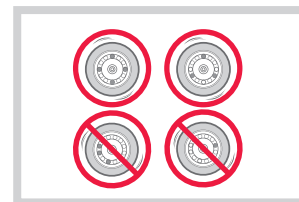
Clean the motor shaft. Remove the foreign substances not to cause any vibration.

**Checking accessories for damage**

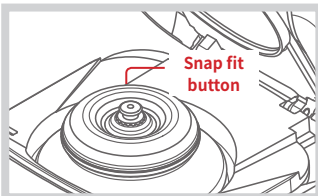
Inspect the rotor and accessories for damage before each use. Discontinue use and replace it if damaged.

**Rotor checking**

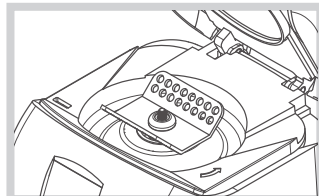
Check the rotor is installed correctly and is sitting firmly on the motor shaft.

**Balancing the rotor**

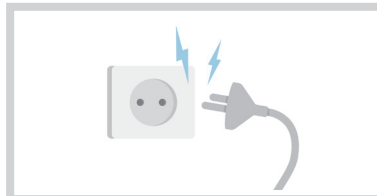
Load the sample symmetrically.

**Snap fit button checking**

Close the snap fit button aligning with the motor shaft.

**PCR Rotor**

Do not exceed the max speed (6,000 rpm/2,400 xg) when the PCR rotor is coupled.

**Electrical safety**

Use the power cord supplied with the device and connect the device to the power supplies that match the electrical requirements. Switch off the device and disconnect the power plug after using the centrifuge.

GRF-m2.0-12

for 12 x 1.5/2.0 mL microtubes

GRF-m1.8-10

for 10 x 1.8 mL cryotubes

GRA-s0.2-32

for 32 x 0.2 mL PCR tubes or
4 rows of PCR strips

Interchangeable rotors