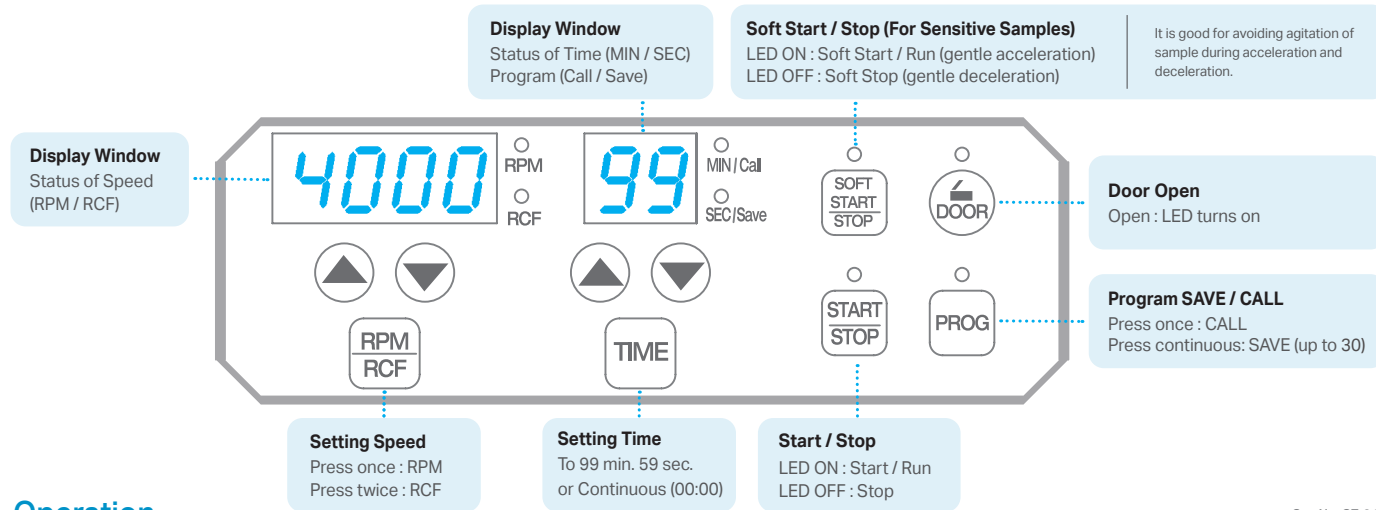


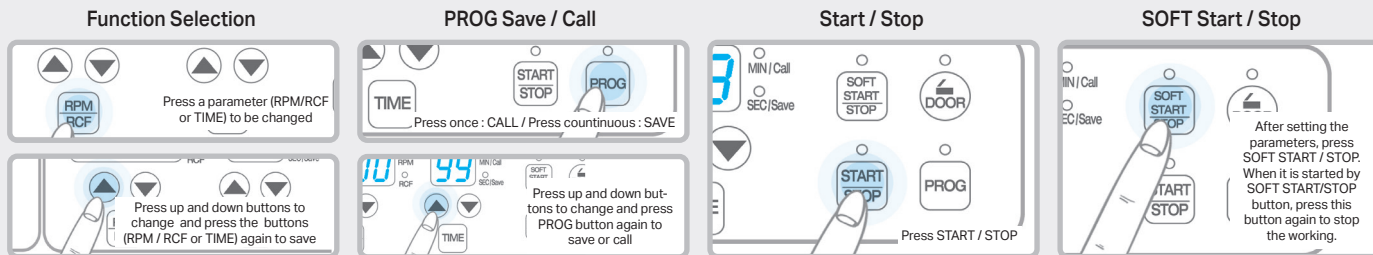


Display & Control Panel



Operation

Cat. No. GZ-0416



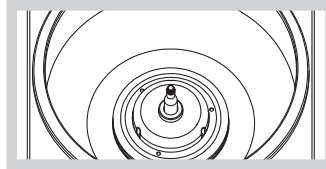


Precautions and Maintenance Tips



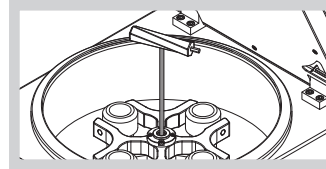
Motor holding cushion

Remove a motor fixing cushion (polyethylene (PE) foam) from the chamber of centrifuge before installation. The cushion is to prevent possible damages caused by motor shaking during shipping or relocation.



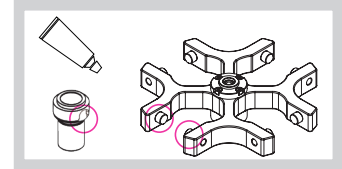
Motor shaft & rotor

Clean the motor shaft. Remove the foreign substances not to cause any vibration.



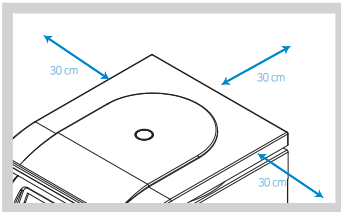
Rotor checking

Check the rotor is installed correctly and is sitting firmly on the motor shaft.



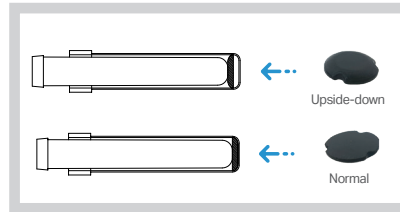
Lubricate the contact area

Clean rotor pivots and bucket grooves. Lubricate them by coating the grease sometimes to swing the buckets enough.



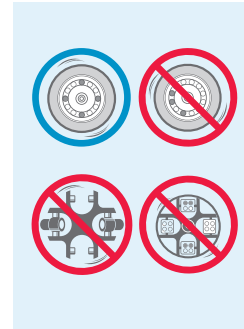
Secure a safety zone or 30 cm around centrifuge

Position the centrifuge with enough space (30 cm) on each side of centrifuge to ensure proper air circulation. Neither hazardous materials nor persons should be permitted within the area during operation.



Cushion rubber of rotor sleeve

After washing or autoclaving, a cushion rubber at the bottom of rotor sleeve (GLB-15A-FA) may fall out of the sleeve and it can cause imbalance. Also, the rubber has a correct direction. The upside-down rubber cause poorly fitted tube from the sleeve. Check the rubber in the sleeve and the direction of the rubber.



Balance buckets and samples

Load the sample tubes symmetrically.

GRS-S-100-4 for GLB-b100-100 / GLB-10-8-100 / GLB-bd15-100 / GLB-bdc15-100
GRA-S-50-10 for GLS-50
GRA-S-c50-10 for GLS-c50
GRS-S-50-4 for GLB-50-50 / GLB-c50-50 / GLB-15-50 / GLB-d15-50 / GLB-dc15-50
GRS-S-15-6 for GLB-d15-15
GRA-S-15-16 incl. GLS-15
GRS-S-mw-2

Interchangeable rotors

