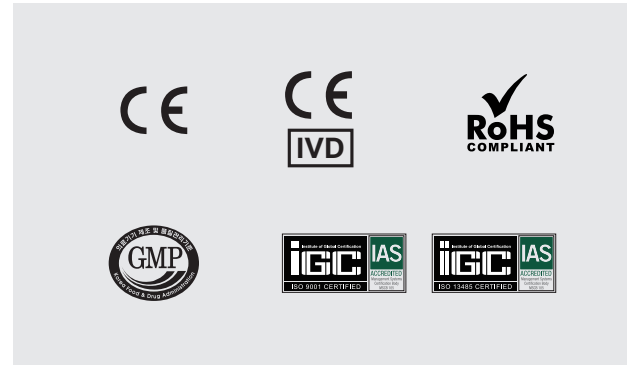


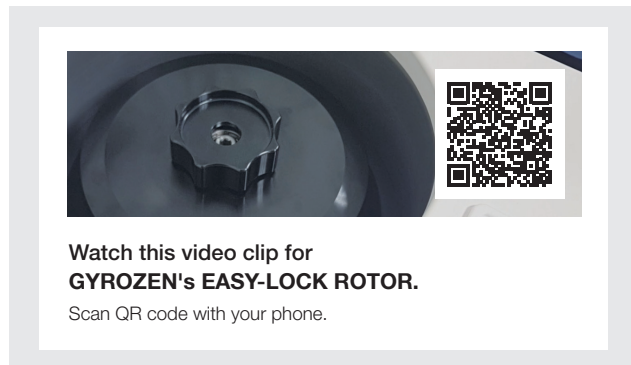
Features



Convenient and intuitive control interface with parameter settings through touch type numeric key input



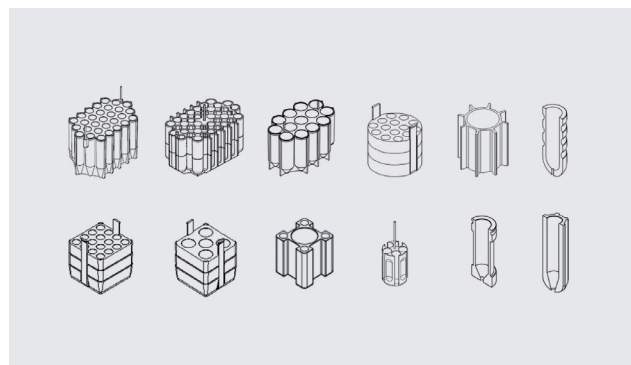
International standards products



One-step twist locking for easy sample loading and unloading (Micro centrifuge only)



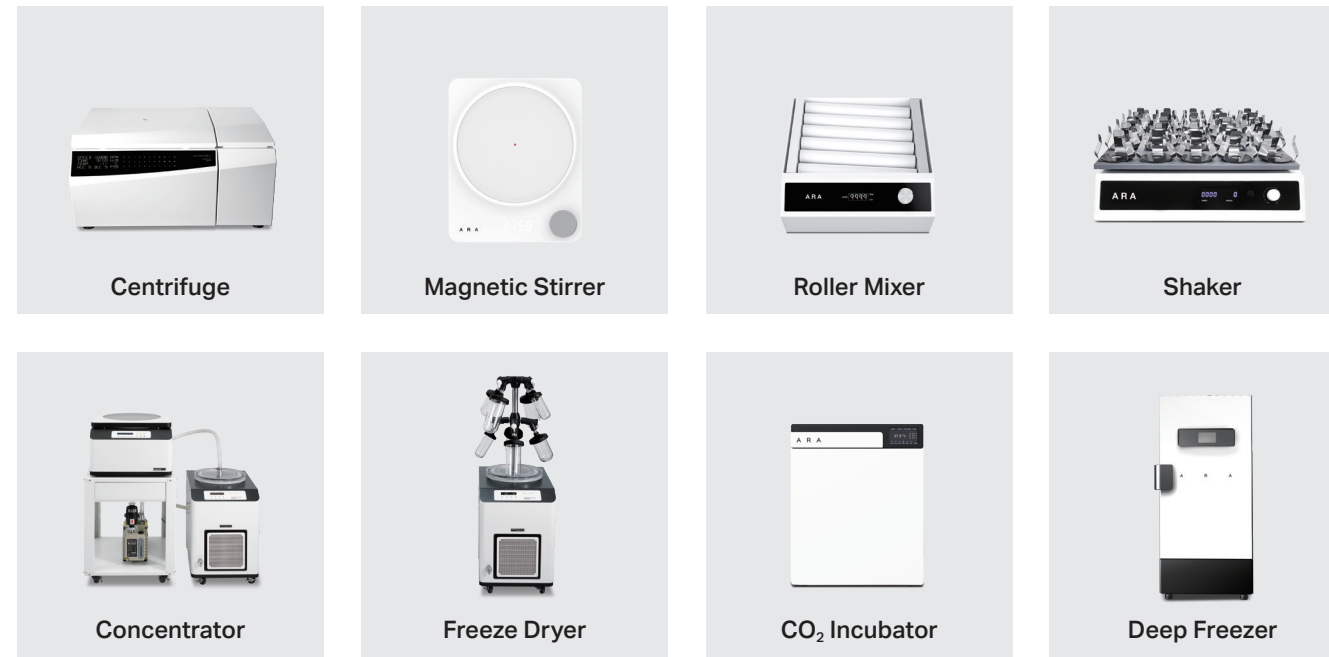
Aerosol tight, **Bio-Safe** micro-rotors and buckets certified by Porton Down, Public Health UK or in-house validated.



Wide range of tube adapters and racks



Easy to clean medical grade stainless steel chamber & UV resistant painting



QUALITY
RELIABILITY
VALUE

PRODUCT OVERVIEW

CENTRIFUGE



A WIDE SPECTRUM FOR ALL APPLICATIONS



FEATURED FUNCTIONS

- IMBALANCE CUTOFF**
Imbalance detection & automatic cutoff stop
- MOTORIZED LID**
Soft touch lid closure
- ROTOR ID**
Automatic rotor recognition
- SHORT SPIN (PULSE)**
Quick run while pressed
- TIME MODE SELECTION**
Selectable time count from starting or set speed
- ACC/DEC RATE CONTROL**
Controllable acceleration (9 steps) & deceleration (10 steps) speed rate
- SOFT START/STOP**
Minimize sample turbulence (416 only)
- NUMBER OF PROGRAMS**
Number of custom-programmed conditions
- FAST COOLING**
Fast Cooldown to 4°C (R models only)
- EASY LOCK ROTOR LID**
One-step click action to close the rotor lid (Micro centrifuge only)
- ONE STEP ROTOR LOCKING**
Direct fastening of fixed angle rotor to motor shaft through protruding bolt of a lid (1696R only)
- PASSWORD PROTECTION**
Suitable for multi-user environments (2236R only)



MICRO CENTRIFUGES

mini 6 Compact quick spinner 150(w) x 150(d) x 90(h) mm 0.65 kg	mini Personal microcentrifuge 208(w) x 245(d) x 145(h) mm 4.4 kg	1536 Medium throughput microcentrifuge 240(w) x 378(d) x 240(h) mm 11.9 kg	1730R Medium throughput refrigerated microcentrifuge 310(w) x 620(d) x 265(h) mm 43 kg	1848R High throughput refrigerated microcentrifuge 380(w) x 654(d) x 312(h) mm 53.5 kg
---	--	--	--	--

FIXED ANGLE ROTOR MAX 6,500 rpm MAX 2,234 xg 2 x 8-tube PCR strip 6 x 2.0 mL	FIXED ANGLE ROTOR MAX 13,500 rpm MAX 12,300 xg 4 x 8-tube PCR strip 10 x 1.8 mL cryotube 12 x 2.0 mL	FIXED ANGLE ROTOR MAX 15,000 rpm MAX 21,583 xg 4 x 8-tube PCR strip 36 x 2.0 mL 10 x 5.0 mL	FIXED ANGLE ROTOR MAX 17,000 rpm MAX 27,237 xg 8 x 8-tube PCR strip 18 x 2.0 mL filter tubes 36 x 2.0 mL 12 x 5.0 mL	SWING-OUT ROTOR MAX 13,000 rpm MAX 16,343 xg 4 x 4 x 2.0 mL	FIXED ANGLE ROTOR MAX 18,000 rpm MAX 30,536 xg 8 x 8-tube PCR strip 48 x 2.0 mL 20 x 5.0 mL 12 x 15 mL conical 8 x 50 mL conical	SWING-OUT ROTOR MAX 13,000 rpm MAX 16,438 xg 6 x 4 x 2.0 mL 2 x 2 x MTP*
--	---	--	--	--	---	--

LOW-SPEED CENTRIFUGES

406 Basic air ventilated low speed centrifuge 296(w) x 412(d) x 206(h) mm 17.5 kg	416 Compact air ventilated low speed centrifuge 375(w) x 480(d) x 260(h) mm 19.5 kg	624R Compact refrigerated low speed centrifuge 584(w) x 535(d) x 317(h) mm 65 kg
---	---	--

FIXED ANGLE ROTOR MAX 4,000 rpm MAX 2,075 xg 12 x vacuum tube 6 x 15 mL 6 x 15 mL conical	FIXED ANGLE ROTOR MAX 4,000 rpm MAX 2,700 xg 16 x vacuum tube 16 x 15 mL 16 x 15 mL conical 4 x 3 x 15 mL conical 10 x 50 mL 10 x 50 mL conical	SWING-OUT ROTOR MAX 4,000 rpm MAX 2,826 xg 2 x 2 x MTP 2 x DWP 4 x 8 x vacuum tube 4 x 3 x 15 mL conical 4 x 2 x 50 mL 4 x 2 x 50 mL conical 4 x 100 mL	FIXED ANGLE ROTOR MAX 6,000 rpm MAX 3,960 xg 24 x vacuum tube 24 x 15 mL 24 x 15 mL conical 10 x 50 mL 10 x 50 mL conical	SWING-OUT ROTOR MAX 4,800 rpm MAX 3,888 xg 2 x 2 x MTP 2 x DWP 4 x 8 x vacuum tube 4 x 3 x 15 mL conical 4 x 2 x 50 mL 4 x 2 x 50 mL conical 4 x 100 mL
--	---	--	--	--

ROTORS OF GYROZEN CENTRIFUGES >

FIXED ANGLE ROTORS >>

mini, mini 6		mini	1536, 1730R		1848R		406		1848R		1730R		
1848R		1848R		416, 624R		416, 624R		624R		1848R		1848R	
1248, 1248R, 1236R		1248, 1248R, 1236R		1248, 1248R, 1236R		1248, 1248R, 1236R		1248, 1248R, 1236R		1248, 1248R, 1236R		1248, 1248R, 1236R	
1580		1580		1580		1580		1580		1580		1580	
1580R		1580R		1580R		1580R		1580R		1580R		1580R	
1696R II		1696R II		1696R II		1696R II		1696R II		1696R II		1696R II	
1736R		1736R		1736R		1736R		1736R		1736R		1736R	
2236R		2236R		2236R		2236R		2236R		2236R		2236R	

SWING-OUT ROTOR >>

4 x 1,000 mL		4 x 750 mL		4 x 750 mL		4/6 x 4 x MTP 4 x DWP		4 x 250 mL		4 x 250 mL	
1248, 1248R, 1236R		1248, 1248R, 1236R		1248, 1248R, 1236R		1248, 1248R, 1236R		1248, 1248R, 1236R		1248, 1248R, 1236R	
1580		1580		1580		1580		1580		1580	
1580R		1580R		1580R		1580R		1580R		1580R	
1696R II		1696R II		1696R II		1696R II		1696R II		1696R II	
1736R		1736R		1736R		1736R		1736R		1736R	
2236R		2236R		2236R		2236R		2236R		2236R	

MULTI-PURPOSE CENTRIFUGES

1248/1248R/1236R Medium throughput multi-purpose centrifuge (air ventilated / refrigerated) 475(w) x 561(d) x 330(h) mm 40 kg 475(w) x 620(d) x 355(h) mm 78 kg	1580/1580R High throughput multi-purpose centrifuge (air ventilated / refrigerated) 540(w) x 650(d) x 380(h) mm 57 kg 770(w) x 650(d) x 390(h) mm 93 kg	1696R II Highest throughput refrigerated multi-purpose centrifuge 775(w) x 695(d) x 395(h) mm 132 kg
---	---	--

FIXED ANGLE ROTOR MAX 12,000 rpm MAX 16,582 xg^{FR} MAX 15,520 xg 30 x 2.0 mL 24 x 15 mL 24 x 15 mL conical 8 x 50 mL 8 x 50 mL conical 6 x 85 mL	SWING-OUT ROTOR MAX 5,000 rpm MAX 5,394 xg 4 x 4 x MTP 4 x DWP 4 x 12 x vacuum tube 4 x 12 x 15 mL 4 x 9 x 15 mL conical 4 x 3 x 50 mL conical 6 x 100 mL 4 x 250 mL	FIXED ANGLE ROTOR MAX 15,000 rpm MAX 25,910 xg^{FR} MAX 24,249 xg 30 x 2.0 mL 24 x 15 mL 24 x 15 mL conical 8 x 50 mL 8 x 50 mL conical 6 x 85 mL 6 x 250 mL (R*) (R* only for 1580R)	SWING-OUT ROTOR MAX 5,000 rpm MAX 5,394 xg 4 x 4 x MTP 4 x DWP 4 x 21 x vacuum tube 4 x 20 x 15 mL 4 x 16 x 15 mL conical 4 x 5 x 50 mL conical 6 x 100 mL 4 x 250 mL 4 x 500 mL 4 x 750 mL	FIXED ANGLE ROTOR MAX 16,000 rpm MAX 27,590 xg 48 x 2.0 mL 20 x 5.0 mL 12 x 15 mL conical 8 x 50 mL 8 x 50 mL conical 6 x 85 mL 6 x 250 mL	SWING-OUT ROTOR MAX 5,000 rpm MAX 5,394 xg 4 x 6 MTP 4 x DWP 4 x 38 x vacuum tube 4 x 29 x 15 mL 4 x 29 x 15 mL conical 4 x 13 x 50 mL conical 6 x 100 mL 4 x 2 x 250 mL 4 x 500 mL 4 x 750 mL 4 x 1,000 mL
---	--	---	---	---	--

HIGH CAPACITY, HIGH-SPEED CENTRIFUGES

1736R High speed, compact refrigerated centrifuge 475(w) x 620(d) x 830(h) mm 110 kg	2236R High speed, high capacity centrifuge for multi-users core facilities 824(w) x 634(d) x 1,049(h) mm 240 kg
--	---

FIXED ANGLE ROTOR MAX 17,000 rpm MAX 32,310 xg 30 x 2.0 mL 12 x 15 mL 12 x 15 mL conical 8 x 50 mL 8 x 50 mL conical 6 x 85 mL 6 x 250 mL 6 x 500 mL	SWING-OUT ROTOR MAX 5,000 rpm MAX 5,394 xg 4 x 4 MTP 4 x DWP 4 x 12 x vacuum tube 4 x 12 x 15 mL 4 x 9 x 15 mL conical 4 x 3 x 50 mL conical 4 x 250 mL	FIXED ANGLE ROTOR MAX 22,000 rpm MAX 54,111 xg 30 x 2.0 mL 12 x 15 mL 12 x 15 mL conical 8 x 50 mL 8 x 50 mL conical 6 x 85 mL 6 x 250 mL 6 x 500 mL 6 x 1,000 mL	SWING-OUT ROTOR MAX 5,000 rpm MAX 5,394 xg 4 x 4 MTP 4 x DWP 4 x 12 x vacuum tube 4 x 12 x 15 mL 4 x 9 x 15 mL conical 4 x 3 x 50 mL conical 4 x 250 mL
--	--	--	--

* MTP: Micro Titer Plate
* DWP: Deep Well Plate