



## Confocal Dish & Plate

(#100350/100351/101350/102350/103350/104350/200350/210350/211350/212350/213350/214350/30106/30206/230106/230206)

### 1. Description

SPL's confocal products allow researchers to acquire high resolution microscopic images of cells in 35 mm culture dishes or 6 well plates. Low auto-fluorescence surface materials were used; ideal for confocal microscopy, phase contrast microscopy, live cell imaging and micro-manipulations.

#### Surface materials for Confocal products

**Glass:** naturally charged, good growth surface for adherent cells

**FLux:** surface modified plastic film (188 µm thick), optimal for confocal microscopy

### 2. Features

- ❖ Crystal grade polystyrene
- ❖ Dish size: 35 mm
- ❖ Hole size: 13 Ø / 20 Ø / 25 Ø
- ❖ 4well Dish: Cat. No. 104350, 214350
- ❖ Plate size: 6 well plate (Cat. No. 30106, 30206, 230106, 230206)
- ❖ Glass bottom thickness: 0.13 ~ 0.16 mm
- ❖ FLux bottom thickness: 0.18 ~ 0.19 mm

### 3. Functional Test

Sterility	:	Passed
Cytotoxicity	:	Passed
Non-Pyrogenic	:	Passed
RNase/DNase Free	:	Passed
DNA free	:	Passed

### 4. Product Range

Cat.No.	Type	Color	Material	External Dimension (mm)	Internal Dimension (mm)	Hole (mm)	Confocal Region (cm <sup>2</sup> )	Working Volume (ml)	External Grip	Surface Treatment	Sterile	Packaging
100350	Adhesion	Clear	PS/Glass	35.00 x 10.00	34.30 x 9.30	13Ø	1.33	3	+	-	+	5 / 100
100351	Insert	Clear	PS	35.00 x 10.00	34.30 x 9.30	-	-	3	+	-	+	10 / 500
101350	Adhesion	Clear	PS/Glass	35.00 x 10.00	34.30 x 9.30	20Ø	3.14	3	+	-	+	5 / 100
102350	Adhesion	Black	PS/Glass	35.00 x 10.00	34.30 x 9.30	13Ø	1.33	3	+	-	+	5 / 100
103350	Adhesion	Black	PS/Glass	35.00 x 10.00	34.30 x 9.30	20Ø	3.14	3	+	-	+	5 / 100
104350	Adhesion	Clear	PS/Glass	35.00 x 10.00	34.30 x 9.30	25Ø	0.98	0.6	+	-	+	5 / 50
200350	Adhesion	Clear	PS/Glass	35.00 x 10.00	34.30 x 9.30	13Ø	1.33	3	+	+	+	5 / 50
210350	Adhesion	Clear	PS/FLux	35.00 x 10.00	34.30 x 9.30	13Ø	1.33	3	+	+	+	5 / 50
211350	Adhesion	Clear	PS/FLux	35.00 x 10.00	34.30 x 9.30	20Ø	3.14	3	+	+	+	5 / 50
212350	Adhesion	Black	PS/FLux	35.00 x 10.00	34.30 x 9.30	13Ø	1.33	3	+	+	+	5 / 50
213350	Adhesion	Black	PS/FLux	35.00 x 10.00	34.30 x 9.30	20Ø	3.14	3	+	+	+	5 / 50
214350	Adhesion	Clear	PS/FLux	35.00 x 10.00	34.30 x 9.30	25Ø	0.98	0.6	+	+	+	5 / 50
30106	Adhesion	Clear	PS/Glass	85.40 x 127.60	35.00/well	13Ø	1.33	3		-	+	1 / 4
30206	Adhesion	Clear	PS/Glass	85.40 x 127.60	35.00/well	20Ø	3.14	3		-	+	1 / 4
230106	Adhesion	Clear	PS/FLux	85.40 x 127.60	35.00/well	13Ø	1.33	3		+	+	1 / 4
230206	Adhesion	Clear	PS/FLux	85.40 x 127.60	35.00/well	20Ø	3.14	3		+	+	1 / 4

## 5. Certification

SPL Life Sciences hereby certifies that the product identified above, inspected to be in compliance with product quality specification and requirements as documented in our ISO 9001:2015 Quality Management System (K-QA-Q031478) in Korea.

## 6. Specifications & Technical Drawing

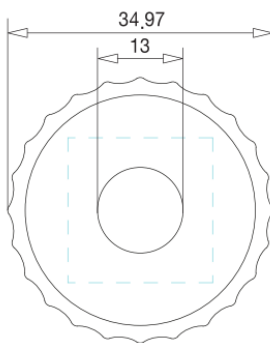
(1) Confocal Dish Glass bottom (# 100350/100351/101350/102350/103350/104350/200350)

- Specifications

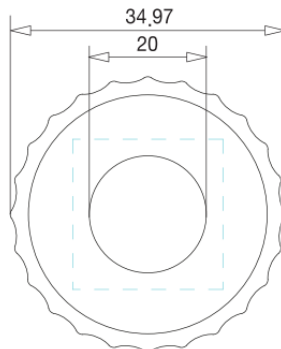
Lid	Dimensions			Material (Resin)	Packaging
	Dish	Hole			
Diameter <sub>Outer</sub> : 40.30 mm Diameter <sub>Inner</sub> : 39.00 mm Height: 6.00 mm	Diameter <sub>Grip</sub> : 40.30 mm Diameter <sub>Outer</sub> : 36.14 mm Diameter <sub>Inner</sub> : 34.97 mm Height: 10.90 mm Growth Area: 9.40 cm <sup>2</sup>	13 Ø or 20 Ø or 25 Ø		Crystal-grade polystyrene (PS)	<ul style="list-style-type: none"> <li>• Pieces/Sleeve: 5</li> <li>• Pieces/Case: 100 (# 104350/200350: 50)</li> </ul>

- Technical Drawing

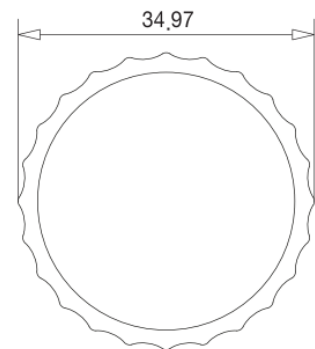
# 100350/102350/200350



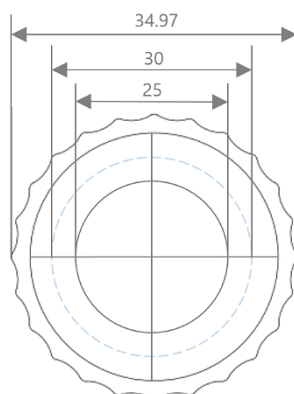
# 101350/103350



# 100351



# 104350 (4well)



(2) Confocal Dish FLux bottom (#210350/211350/212350/213350/214350)

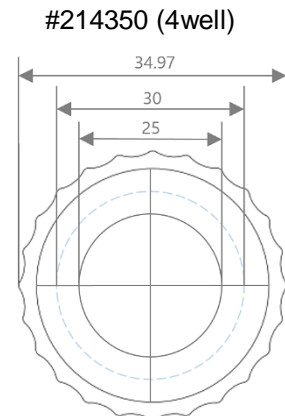
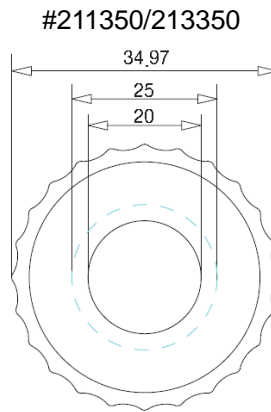
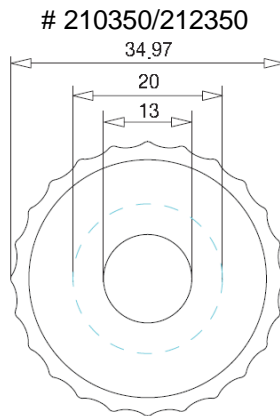
SPL-TDS-CDP

For Research Use Only. Not intended for use in diagnostic or therapeutic procedures.  
© SPL Life Sciences Co., Ltd., Version 6, November 20<sup>th</sup>, 2018

## - Specifications

Lid	Dimensions			Material (Resin)	Packaging
	Dish	Hole			
Diameter <sub>Outer</sub> : 40.30 mm Diameter <sub>Inner</sub> : 39.00 mm Height: 6.00 mm	Diameter <sub>Grip</sub> : 40.30 mm Diameter <sub>Outer</sub> : 36.14 mm Diameter <sub>Inner</sub> : 34.97 mm Height: 10.90 mm Growth Area: 9.40 cm <sup>2</sup>	13 Ø or 20 Ø or 25 Ø	Crystal-grade polystyrene (PS)	<ul style="list-style-type: none"> <li>• Pieces/Sleeve: 5</li> <li>• Pieces/Case: 50</li> </ul>	

## - Technical Drawing



## (3) Confocal Plate 6 Well (# 30106/30206/230106/230206)

### - Specifications

Lid		Dimensions		Well		Material (Resin)	Packaging
		Plate					
Length:	84.90 mm	Length:	85.40 mm	Diameter:	35.00 mm	Crystal-grade polystyrene (PS)	<ul style="list-style-type: none"> <li>• Pieces/Sleeve: 1</li> <li>• Pieces/Case: 4</li> </ul>
Width:	127.10 mm	Width:	127.60 mm	Depth:	17.40 mm		
Height:	10.00 mm	Height:	20.20 mm	Center to Center:	39.00 mm		
		Growth Area:	9.60 cm <sup>2</sup>	Hole:	13 or 20 Ø		

### - Technical Drawing

